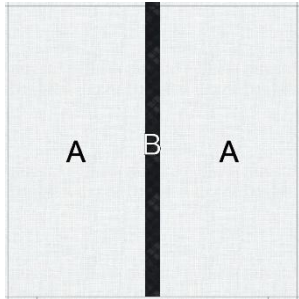
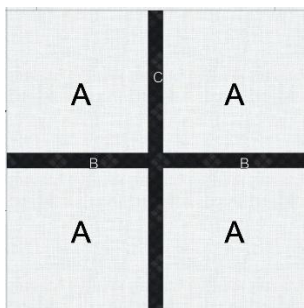


Connector Blocks

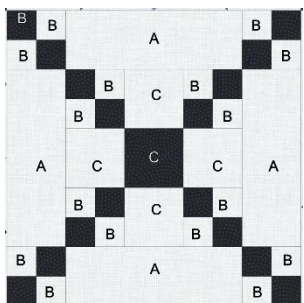
Blocks are 10.5 x 10.5 unfinished



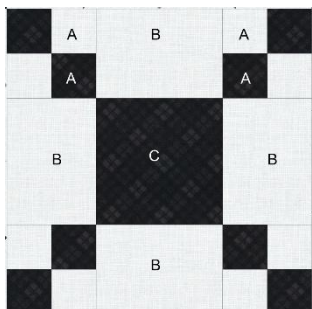
A-Background	10.5 x 5.25	Cut 2
B-Black Fabric	10.5 x 1	Cut 1



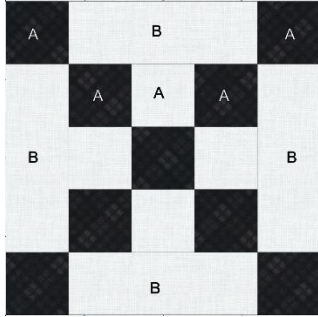
A-Background	5.25 x 5.25	Cut 4
B-Black	5.25 x 1	Cut 2
C-Black	5.25 x 10.5	Cut 1



A-Background	6.5 x 2.5	Cut 4
B-Background	1.5 x 1.5	Cut 16
C-Background	2.5 x 2.5	Cut 4
C-Black	2.5 x 2.5	Cut 1
B-Black	1.5 x 1.5	Cut 16



A-Background	2 x 2	Cut 8
B-Background	4.5 x 3.5	Cut 4
C-Black	4.5 x 4.5	Cut 1
A-Black	2 x 2	Cut 8



A-Background	2.5 x 2.5	Cut 4
B-Background	2.5 x 6.5	Cut 4
A-Black	2.5 x 2.5	Cut 9

HOW TO STRIP PIECE A 9 PATCH QUILT BLOCK

The diagram illustrates the strip piecing process for a 9-patch quilt block. It shows how to cut fabric strips, sew them together, and assemble them into the final 3x3 grid pattern.

Measurements for the patches are given for each block. Several of the blocks can be made more easily with strip piecing. If you prefer strip piecing, use the given measurements to cut a strip of each color, sew the strips together then cross cut the strips into the correct unit size.

For example, to strip piece the 4-patch unit in the third connector block cut a 1.5 inch width of fabric strip of the background and the black fabric. Sew the strips together. Cut the strip into 1.5 inch patches. Use the patches in the correct orientation to make the 4-patch unit.