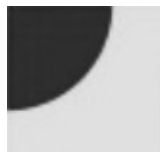


**Phoenix Modern Quilt Guild
Saturday, June 14, 2025
Drunkard's Path Supply List**



The Drunkards Path block is made of two pieces:

- The circle edge is a “belly” piece (black in the upper left corner in the picture).
- The “L” shaped is a “holes” piece (off white in the picture).

Fabric Requirements for 16 blocks (24” x 24” finished piece)

- 2/3 of a yard (40” wide) for **each** of two highly contrasting fabrics. Solid colors or prints.
- The two must have **HIGH** contrast.

Using your stash

- Sixteen 8” x 8” pieces of fabric for each hole (L shaped) piece
- Sixteen 7” x 7” pieces of fabric for each belly (circle) piece

Preparation for Class

- Prewash the fabrics if desired.
- Pressing and starching is recommended.
- If using yardage: Cut hole fabric into 8” strips, WOF; Cut belly fabric into 7” strips, WOF and then into squares (8” x 8” and 7” by 7”).



Supplies to Bring to Class

You **DO NOT** need a special quarter circle ruler. We supply a freezer paper templates.

1. Sewing machine and normal sewing supplies (seam ripper, thread, pre-wound bobbins, straight pins, etc)
2. Scraps to use as leaders and enders
3. 45 mm rotary cutter with a SHARP blade
4. Paper scissors
5. 12” ruler
6. 7” square ruler (or larger...no need to buy an exact size)
7. If you have a turntable cutting mat it is nice to use but not necessary
8. Portable iron and mat

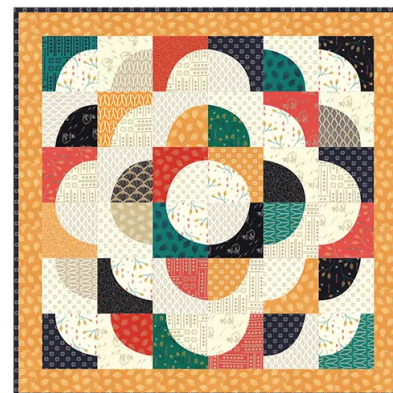
More layout choices

Note: these take more than 16 blocks but you could start on them in class to learn how to sew the curved seam.

For the **Wee Animals 45 x 45"** quilt, visit <https://www.danimiller.com/blog/1618/wee-animal-quilt-tutorial/>



The Fat Quarter Shop offers a free pattern using Drunkards Path blocks. It is call the **Daybreak Quilt Pattern** and it is designed by Sherri McConnell. <https://www.fatquartershop.com/daybreak-quilt-pattern-free-pdf-ise>



Finished size: 58 1/2" x 58 1/2"

More ideas

